

Electrone Americas Ltd Co



Electrone 72X



Call us @ 561-395-3398

Mexico City No :

52 (55) 4169-2798

Para preguntas en Español favor de llamar al USA-561-705-6238

Electrone 72X SMO

Specifications

Characteristics

Model	721 / 723
LCD	20*4, Character Display (Blue Backlit)
Keys	16 Tactile
Certification	CE, RoHS
Warranty	12 Months

Physical

Housing Color	Black
Color of Legends	Various
Enclosure Material	Aluminum
Dimension	Width: 9.4 inch / 239 mm Height: 4.8 inch / 123 mm Depth: 1.9 inch / 48 mm (721SMO) 2.5 inch / 64 mm (723SMO)
Display Dimension	Width: 1.024 inch / 26 mm Height: 3 inch / 76 mm

Mechanical

Key switches	Metal with tactile feedback
Keycap Type	Low Profile , vandal resistant
Switching life	1000000 cycles
Operating Force	1.2N + - 0.2N
Total Travel	0.5mm+ - 0.25

Power

Power consumption	120 ma Max
Display Command Set	ASCII Standard
Power connection	See Ordering Information

Interface

Unit	TCP/IP, PoE
Auxiliary	Auxiliary 1: RS232 Auxiliary 2: 350 mA / 12 Volts

Environmental

Operating temperature	32° to 149°F (0° to 65°C)
Storage temperature	-4° to 160°F (-20° to 70°C)
Operating humidity	30% to 90%
Storage humidity	20% to 95%
IP Rating	IP65

Model Selection

Model	Interface	Power	Connectors
721 SMO	POE	Powered from the network port which must be a detecting POE port.	RJ45 F
721 SMO-VCP	USB	Powered from the USB connection	USB-Mini F

Features

- Model 721SMO requires a detecting POE power source, can be used with a detecting injector.
- In 721SMO model, auxiliary ports can be used to operate an electronic lock.

Enclosure

- Front enclosure of any 72x model consists of metal with screen and keypad.
- Back Enclosure

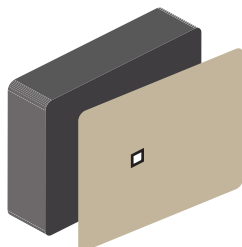
721 Enclosure Back

Enclosure Back consists of rectangular hole to allow an RJ45 Male connector to be passed through

Rectangular Hole :

Vertical : 1.1 inch / 2.8 mm

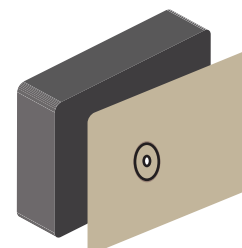
Horizontal : 1 inch / 2.5 mm



723 Enclosure Back

Enclosure back consists of round hole and rubber grommet; requires cable to be passed through the grommet and an RJ45 connector to be crimped on after.

723SMO has an extra back plate.



Applications

- ✓ Access Control
- ✓ ATM Machine
- ✓ Kiosk
- ✓ Self-service Terminal
- ✓ Digital Lock systems
- ✓ Cabinet Security
- & Many More



Packing Information

Single Unit : 12 X 9 X 6 inch
Weight : 5 lbs



Electrone Americas Ltd Co

129 N.W. 13TH Street Suite D-21, Boca Raton, FL 33432 USA
+1-561-395-3398 Mexico City No : +52 (55) 4169-2798
sales@electroneamericas.com
<http://www.electroneamericas.com/>

Para preguntas en Español favor de llamar al USA-561-705-6238

Errors & omissions accepted. We reserve a right to change the specification without prior notice.